

## Specifications

### STANDARD CONSTRUCTION

- Bulkhead ..... 12 gauge rigidized treadplate
- Compartment bottoms ..... 10 gauge galvaneal
- Compartment tops ..... 12 gauge rigidized treadplate
- Longsills ..... 3" x 3"x 1/4" wall (no wheel housings)
- Crossmembers..... 3" x 6" tubing with 7 gauge wall front, intermediate and rear
- Crossmembers-support ..... 3" x 3" tubing with 7 gauge wall (between longitudinals)
- Doors..... 10 gauge galvaneal with 12 gauge galvaneal hat section reinforcement
- End panels (front and rear). 10 gauge galvaneal
- Fenders ..... 10 gauge galvaneal with rubber fenderettes
- Intermediate panels ..... 10 gauge galvaneal
- Floor ..... 3/16" treadplate steel
- Loadspace inside centers ... 12 gauge rigidized treadplate
- Rear Kickplate..... 12 gauge rigidized treadplate
- Crane reinforcement ..... (4) vertical supports with gussets made of 3" x 5" tubing with 7 gauge wall
- Crane reinforcement top plate (4) vertical tube supports 3x5 gauge tube with 1/4x1/2 plate reinforcement
- Rear Frame reinforcement.. 3" x 6" tubing with 7 gauge wall reinforcement (full length) at top, 3" x 3" tubing with 7 gauge wall reinforcement (full length) at bottom, and (6) 3" x 3" tubing with 7 gauge wall reinforcements evenly spaced vertically
- Shelving ..... 16 gauge high-spangle galvanized steel (250# capacity)
- Tailgate ..... 14 gauge galvaneal (double panel, formed construction, 8" high)
- A-40 galvaneal steel construction. Two-sided zinc coated galvaneal steel (.40 oz of zinc coating per square foot of steel) provides maximum rust and corrosion resistance.
- Body construction is mechanically fastened and welded.



Shown with optional crane, bumper and manual outriggers.

### STANDARD FEATURES / EQUIPMENT

- Lock-bolt construction provides unbeatable strength, eliminates rust-causing welding and grinding, and promotes corrosion-free, long-lasting product.
- Four “D” ring tie-downs installed in the load-space (6,000 # capacity each)
- “Clip-On” Automotive bulb-type door seals (factory installed).
- All shelving is adjustable to any height and is mounted on **strut channels** for superior strength
- **Lock cylinders** are keyed alike with single-bitted keys and have a weatherproof cover.
- **Primer** is a high-grade automotive type. Bodies are cleaned with a high-temperature, high-pressure chemical solution prior to prime painting.
- **Gas shock door holders**
- **Undercoating** on underside of floor and wheel wells.
- Stainless Steel blind mount 3 pt. “D” ring door latch with easy operation rollers on the slide rods
- **Stainless Steel “bolt-on” hinges** with stainless steel bolts and gaskets (3 per vertical compartment door)
- **One-piece 10 ga** sides for strength and rigidity.
- **STAHL** 's exclusive 5-year “No Rust, No Bust” warranty.

Continues on reverse side.

# STANDARD COMPARTMENTATION

COMPARTMENT	BODY LENGTH	COMPT. WIDTH	CURBSIDE COMPARTMENTATION	STREETSIDE COMPARTMENTATION
Front vertical	108" 132"	32"	Two (2) adjustable material trays with adjustable dividers	Two (2) adjustable material trays with adjustable dividers
Second Front Vertical	132"	24"	Two (2) adjustable plain shelves	Two (2) adjustable plain shelves
Horizontal	108" 132"	50"	One (1) full width adjustable (bolt-in) material tray with adjustable dividers	Open
Rear vertical	108" 132"	26"	Two (2) adjustable material trays with adjustable dividers or 8,000# (48,000 ft. #) crane reinforcement	Two (2) adjustable material trays with adjustable dividers

## DIMENSIONAL SPECIFICATIONS

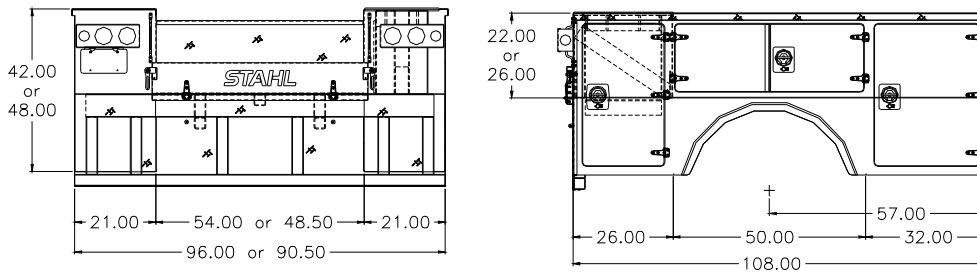
DESCRIPTION				
Body Length	108"	108"	132"	132"
Body Height*	42"	48"	42"	48"
Cab-to-axle	60"	60"	84"	84"
First Vertical Width	32"			
Clear door opening	25"			
Second Vertical Width	N/A	N/A	24"	24"
Clear door opening	N/A	N/A	19"	19"
Horizontal Width	50"			
Clear door opening	47"			
Rear Vertical Width	26"			
Clear door opening	19"			
Vertical Compartment Height	42"	48"	42"	48"
Clear door opening	34"	40"	34"	40"
Horizontal Compartment Height	21.75"	25.75"	21.75"	25.75"
Clear door opening	15"	19"	15"	19"
Compartment Depth	21"			
Compartment Depth (useable)	19"			
Floor-to-Compartment Top Height	22"	26"	22"	26"
Floor-to-Compartment Bottom	20"	22"	20"	22"
Tailgate Height	8"			

## OPTIONAL EQUIPMENT

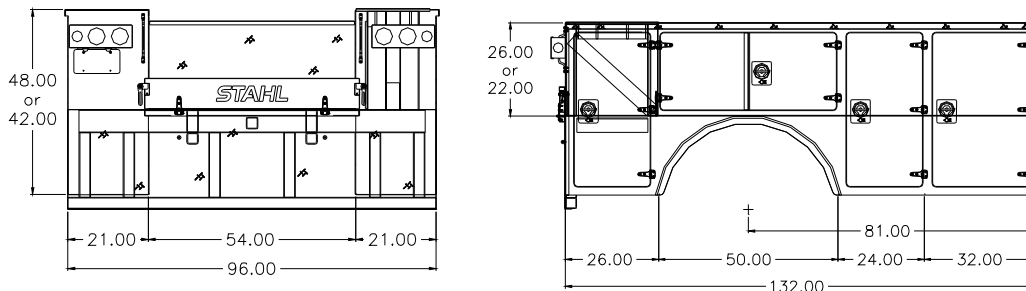
- Bumpers
- Dome Lights
- Fuel Fill (Alum)
- Hooks
- LED Lights
- Louvers
- LowSliding Roof
- Non-slip Bedliner
- Paint and Install
- Shelves
- Slam Action Tailgate
- Tank Holder
- Tie down Rings
- Toolbox Tray
- Tray

\*Rubber fenderettes: 48" high bodies have 24" fender radius for R22.5" tires.  
42" high bodies have 21" fender radius for R19.5" tires.

### 108" Body



### 132" Body



Due to constant product evaluations and improvements, specifications and options are subject to change without notice.